

FOR LEASE OFFICE SPACE

navpoint
REAL ESTATE GROUP



9565 S Kingston Court, Englewood, CO

- Excellent South Metro Location
- Abundant surface and underground parking
- Great Access to I-25, C-470, and E-470
- Close Proximity to restaurants, hotels, and other amenities at nearby Park Meadows
- Functional Layout to Accommodate Many Users

County: Douglas

Year Built: 2000

Zoning: PUD

Building Size: 5,350 SF

Available Space: 1,600 SF

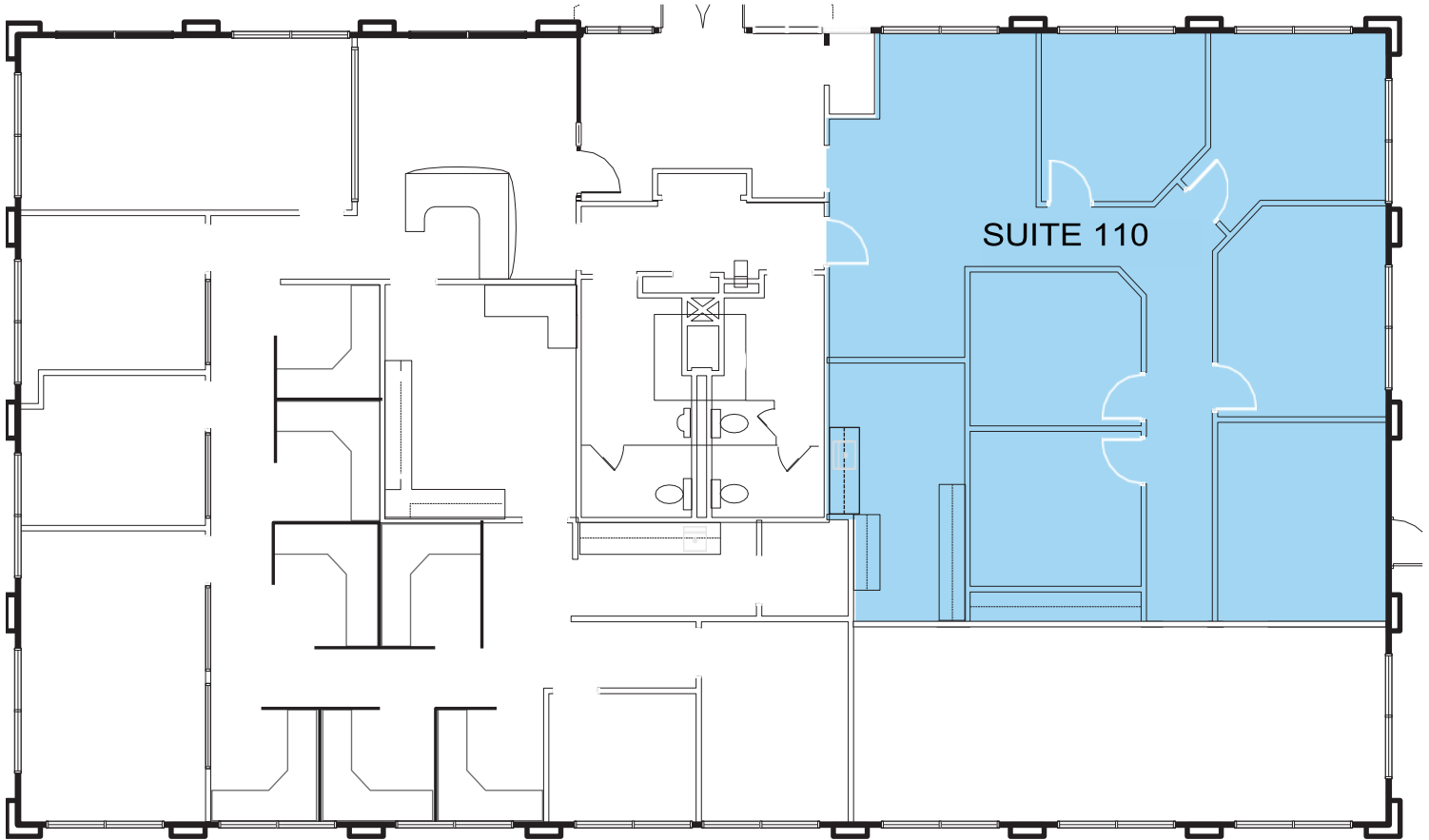
Lease Rate: \$24.00-\$25.00/SF

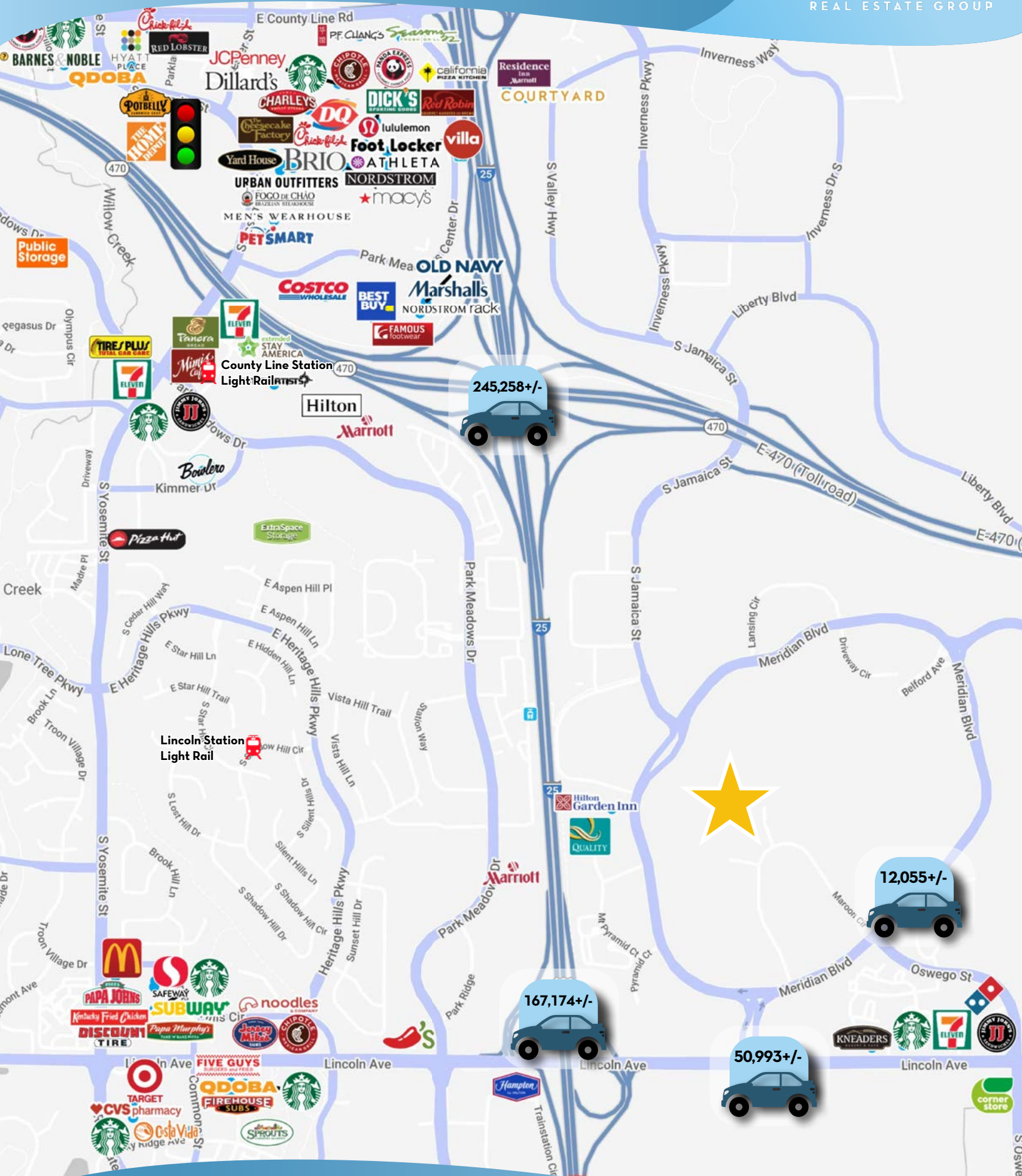
Lease Type: Full Service

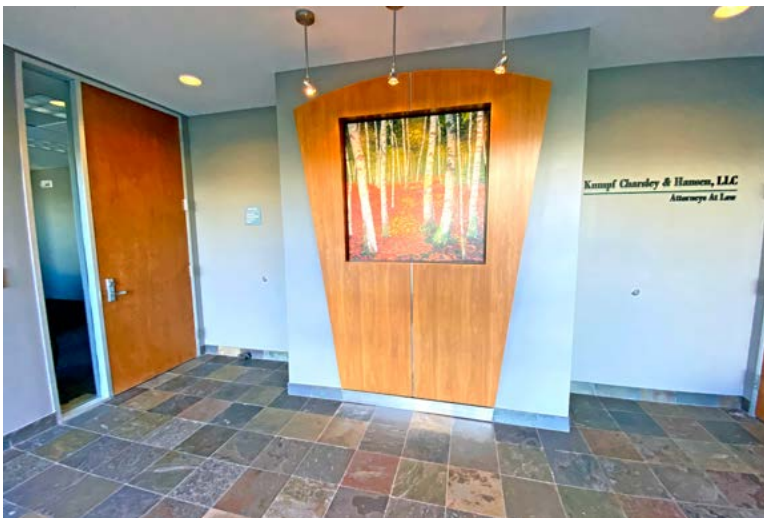
Brent Ham - Lead
cell: 303.513.8189
brent.ham@navpointre.com

Matt Call
cell: 303.956.5781
matt.call@navpointre.com

Suite 110 - 1,600 SF

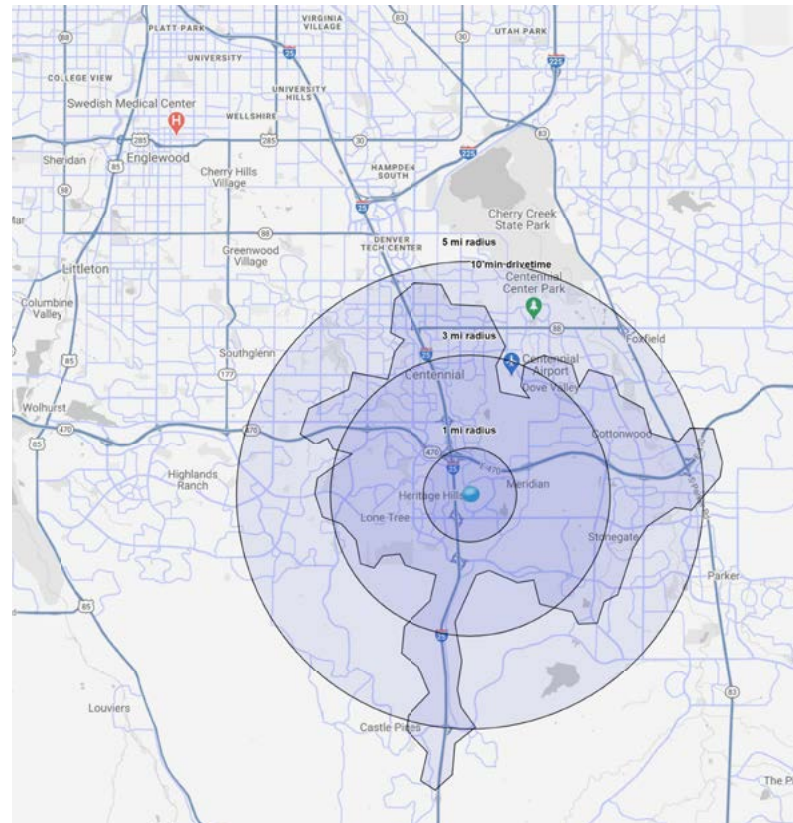






DEMOGRAPHICS

	1 MILE	3 MILES	5 MILES
POPULATION			
2025 Projection	10,836	66,061	213,885
2020 Estimate	9,590	56,649	198,534
Growth 2020-2025	2.6%	2.2%	1.5%
Growth 2010-2020	7.9%	5.2%	2.3%
Average Household Size	2.0	2.3	2.6
Median Age	34.7	37.7	37.5
HOUSEHOLD INCOME			
2020 Average	\$128,271	\$143,379	\$140,203
HOUSING			
Median Home Value	\$730,154	\$542,109	\$494,147
Median Year Built	2008	2004	1999
EMPLOYMENT			
Businesses	823	4,932	11,862
Employees	11,165	73,071	161,644



PROXIMITY TO MAJOR METRO DENVER POINTS OF INTEREST



C-470
4 MINUTES



DENVER TECH CENTER
13 MINUTES



PARK MEADOWS
9 MINUTES



DOWNTOWN DENVER
27 MINUTES



DENVER INTERNATIONAL AIRPORT
32 MINUTES