

895

N. Ridge Road

PRIME DEVELOPMENT LAND FOR SALE | CASTLE ROCK, CO



895 NORTH RIDGE ROAD | CASTLE ROCK, CO 80104

Lot Size: 10.55 AC
 SF Lot: 459,558 SF
 Zoning: Rural Residential
 Property Type: Land
 City: Castle Rock
 County: Unincorporated Douglas County
 Price: \$3,976,592

- ◇ Lot Size of 10.55 Acres
- ◇ Located a quarter mile south of Highway 86 across from the King Soopers commercial area
- ◇ Zoned RR—County open to higher density residential, commercial, or mixed use
- ◇ Unparalleled views of the Front Range
- ◇ 16.5 acre feet of water adjudicated

navpoint
 REAL ESTATE GROUP

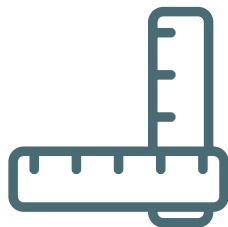
Matt Call
 Principal
 Office: 720.420.7530
 Cell: 303.956.5781
 matt.call@navpointre.com

Jeff Brandon
 Brokerage Services
 Office: 720.420.7530
 Cell: 303.870.4091
 jeff.brandon@navpointre.com

895

N. Ridge Road

PRIME DEVELOPMENT LAND FOR SALE | CASTLE ROCK, CO



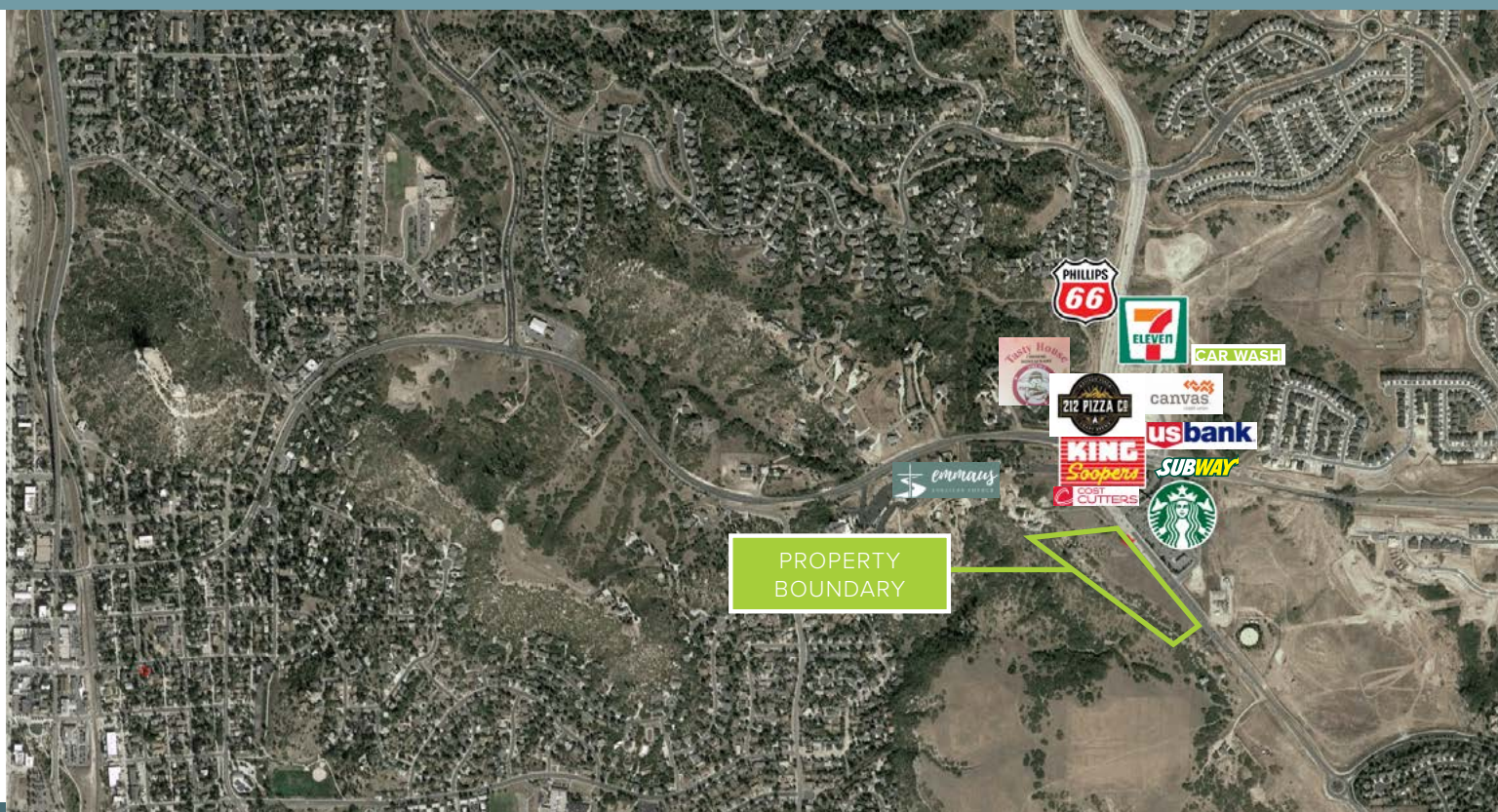
Lot Size
10.55 AC



Sale Price
\$3,976,592

DEMOGRAPHICS

	1 MILE	3 MILES	5 MILES
<i>POPULATION</i>			
2025 Projection	6,783	39,611	77,316
2020 Estimate	6,124	36,335	70,169
Growth 2020-2025	2.2%	1.8%	2.0%
Growth 2010-2020	4.3%	2.4%	2.6%
Average Household Size	3.0	2.7	2.8
Median Age	36.7	37.4	37.1
<i>HOUSEHOLD INCOME</i>			
2020 Average	\$123,369	\$122,179	\$133,039
<i>HOUSING</i>			
Median Home Value	\$453,340	\$474,593	\$486,539
Median Year Built	2000	2001	2004
<i>EMPLOYMENT</i>			
Businesses	75	1,598	2,620
Employees	641	15,638	25,085



895

N. Ridge Road

PRIME DEVELOPMENT LAND FOR SALE | CASTLE ROCK, CO

