

FOR LEASE

23 Inverness Way East

Englewood, CO 80112



County: Arapahoe
Building Size: 56,465 SF
Site Size: 4.67 Acres
Year Built: 1981
Space Available: 2,861 SF
Suite 160: 1,360 SF
Suite 175: 1,501 SF
Lease Rate: \$23.00/SF Full Service

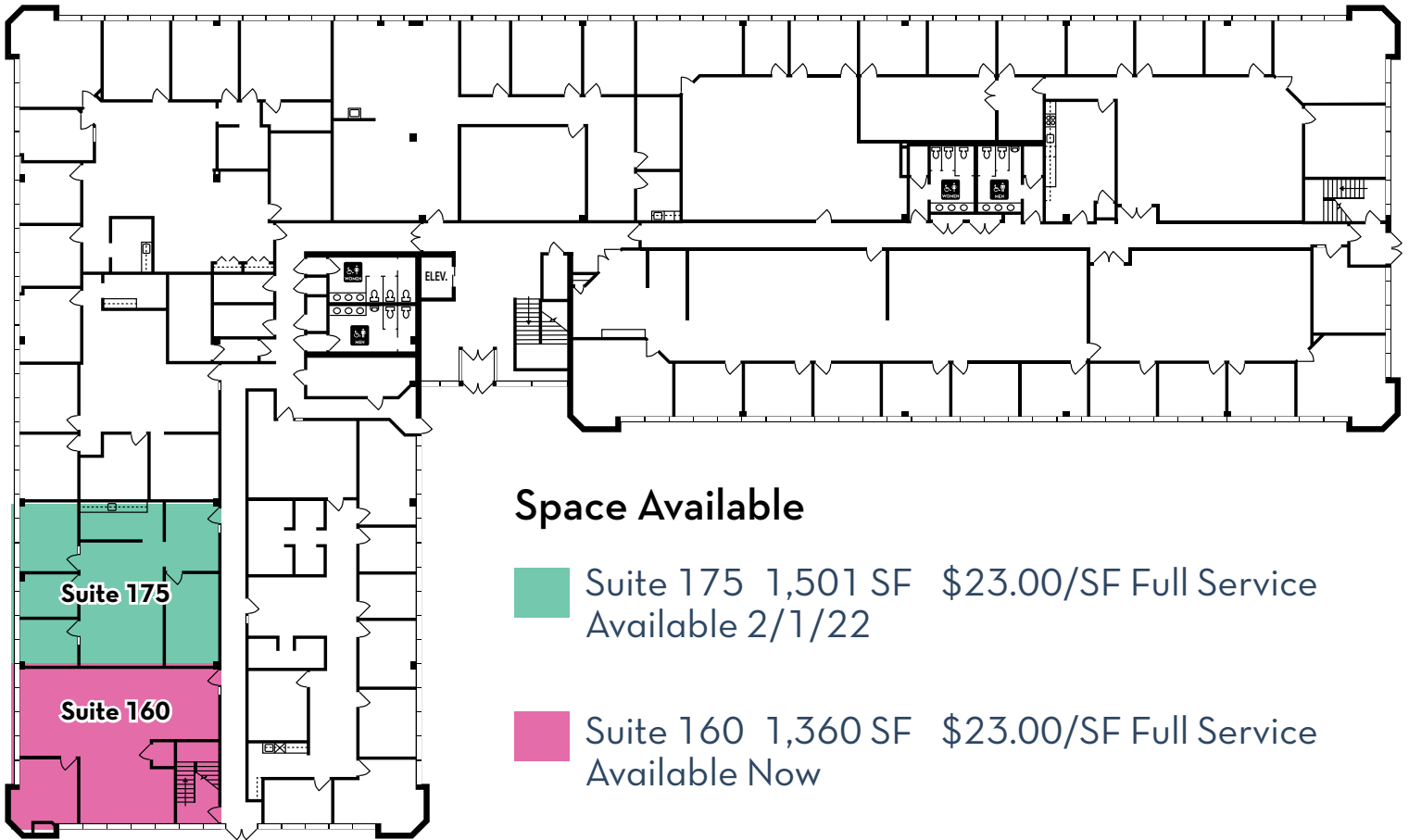
- Located in the prestigious Inverness Business Park
- Ample parking
- Well maintained with professional landscaping and outside seating area
- Minutes from Park Meadows Mall, Colorado Athletic Club, and Inverness Hotel & Conference Center
- Close proximity to Light Rail Stations

navpoint
REAL ESTATE GROUP

Jeff Brandon
Brokerage Services
office 720.420.7530
cell 303.870.4091
jeff.brandon@navpointre.com

Matt Kulbe
Brokerage Services
office 720.420.7530
cell 720.635.4591
matt.kulbe@navpointre.com

Floorplan is not to scale.



Space Available

- Suite 175 1,501 SF \$23.00/SF Full Service Available 2/1/22
- Suite 160 1,360 SF \$23.00/SF Full Service Available Now



23 Inveness Way East | Englewood, CO 80112

